

VOO VOO



VV 421



VV 422



VV 423



Type of fabric	<i>bond, keimo, sawana</i>	<i>charles, charles SD*, fighter, pastel, roccia, sawana pik, valencia</i>	<i>blazer, crisp, fame, silvertex, synergy, synergy SD*, entrusted fabrics</i>	<i>remix 2, remix 2 SD*, leather, client's own leather</i>	Studio Design
	1	2	3	4	5
VV 421	602	685	743	1 038	1 153
VV 422	714	822	897	1 324	1 471
VV 423	855	992	1 087	1 615	1 794
VV 401	366	380	386	465	517
VV 402	499	540	565	735	817
VV 403	639	705	751	1 025	1 139
VV C01	600	664	713	1 005	1 117

* Information on the possible use of fabrics from the Studio Design offer - table page 9

VV 401



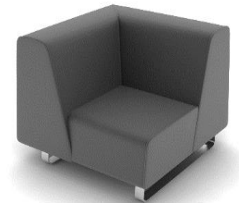
VV 402



VV 403



VV C01



Base	CODE		EUR
Chromed skid with felt padding		●	
Powder painted (coloring according to Bejot's pattern book)		○	
Additional equipment			
Mediaport (white-W or black-B): 1 voltage socket 230V (type E-Poland/ France or type F-Germany, or type G-Great Britain) + 2 x USB chargers	[type]2VCC	○	+251
Mediaport(white-W or black-B): 2 voltage sockets 230V (type E-Poland/ France or type F-Germany, or type G-Great Britain)	[type]2VV	○	+140
Stitches			
Stitches in the colour of upholstery.		●	
White, grey, orange, red, green or black stitches for leather-upholstered armchairs or for keimo, valencia, silvertex collection upholstery.		○	

VOO VOO module elements*



VV 4011



VV 4021



VV 4031

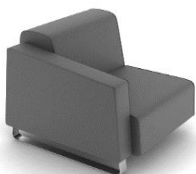


Type of fabric	<i>bond, keimo, sawana</i>	<i>charles, charles SD*, fighter, pastel, roccia, sawana pik, valencia</i>	<i>blazer, crisp, fame, silvertex, synergy, synergy SD*, entrusted fabrics</i>	<i>remix 2, remix 2 SD*, leather, client's own leather</i>	Studio Design
	1	2	3	4	5
VV 4011	317	329	337	415	461
VV 4021	448	486	515	685	761
VV 4031	586	652	702	975	1 084
VV 411 L/R	424	469	503	705	784
VV 412 L/R	556	631	681	979	1 088
VV 413 L/R	694	797	868	1 270	1 411
VV - C	510	565	606	855	950
Leg closing the set	58				

* Information on the possible use of fabrics from the Studio Design offer - table page 9

L - armrest on the left side of the sitting person
R - armrest on the right side of the sitting person

VV 411R



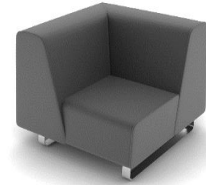
VV 412R



VV 413R



VV - C



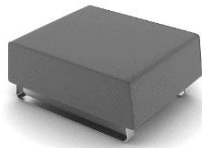
Base	CODE		EUR
Chromed skid with felt padding		●	
Powder painted (coloring according to Bejot's pattern book)		○	
Additional equipment			
Mediaport (white-W or black-B): 1 voltage socket 230V (type E-Poland/ France or type F-Germany, or type G-Great Britain) + 2 x USB chargers	[type]2VCC	○	+251
Mediaport(white-W or black-B): 2 voltage sockets 230V (type E-Poland/ France or type F-Germany, or type G-Great Britain)	[type]2VV	○	+140
Stitches			
Stitches in the colour of upholstery.		●	
White, grey, orange, red, green or black stitches for leather-upholstered armchairs or for keimo, valencia, silvertex collection upholstery.		○	

Modular components allow the system to compose individual sets. When ordering there is required a based on sight drawing.

VOO VOO



VV P600



VV P1200



Type of fabric	<i>bond, keimo, sawana</i>	<i>charles, charles SD*, fighter, pastel, roccia, sawana pik, valencia</i>	<i>blazer, crisp, fame, silvertex, synergy, synergy SD*, entrusted fabrics</i>	<i>remix 2, remix 2 SD*, leather, client's own leather</i>	Studio Design
	1	2	3	4	5
VV P600	259	289	310	437	485
VV P1200	386	441	475	699	777

* Information on the possible use of fabrics from the Studio Design offer - table page 9

Base	CODE		EUR
Chromed with felt padding		●	
Powder painted (coloring according to Bejot's pattern book)		○	

VV TS4



VV TS5



Type of top/ dimensions	<i>Melamine (the thickness. of the table top 18 mm)</i>	construction without a table
VV TS4 1300 x 700 mm; h: 540 mm	514	433
VV TS5 700 x 700 mm; h: 540 mm	444	416
VV TS3 680 x 500 mm; h: 60 mm	205	
VV WORK 455 x 340 mm; h: 730 mm	261	

VV TS3



VV WORK



Base	CODE		EUR
Chromed		●	

VOO VOO 9XX



VV 921



VV 922



VV 923



VV 90C



Type of fabric	keimo, sawana	charles, charles SD*, fighter, pastel, roccia, sawana pik, valencia	blazer, crisp, fame, silvertex, synergy, synergy SD*, entrusted fabrics	remix 2, remix 2 SD*, leather, client's own leather	Studio Design
	1	2	3	4	5
VV 921	1 478	1 586	1 737	2 412	2 680
VV 922	1 699	1 829	2 013	2 870	3 189
VV 923	2 073	2 226	2 443	3 408	3 786
VV 911 L/R	1 135	1 211	1 320	1 831	2 035
VV 912 L/R	1 380	1 487	1 639	2 335	2 595
VV 913 L/R	1 684	1 806	1 979	2 787	3 096
VV 901	825	870	935	1 250	1 389
VV 902	1 045	1 113	1 211	1 668	1 854
VV 903	1 419	1 511	1 641	2 245	2 494
VV 90C	1 135	1 211	1 320	1 831	2 035

* Information on the possible use of fabrics from the Studio Design offer - table page 9

L - the side on the left side of a sitting person

R - side on the right hand side of the sitting person

VV 901



VV 902



VV 903



VV 911R



VV 912R



Base	CODE	EUR
Chromed skid with felt padding		●
Powder painted (coloring according to Bejot's pattern book)		○
Additional equipment		
Mediaport (white-W or black-B): 1 voltage socket 230V (type E-Poland/ France or type F-Germany, or type G-Great Britain) + 2 x USB chargers	[type]2VCC	○ +251
Mediaport(white-W or black-B): 2 voltage sockets 230V (type E-Poland/ France or type F-Germany, or type G-Great Britain)	[type]2VV	○ +140
Possibility to perform in a variety of colours within one type of the fabric (as in the pictures above)		○

Recommended retail prices in EUR exclusive of VAT

● STANDARD ○ OPTION

VOO VOO 9XX BOX



VV 922 BOX + TB



Type of fabric	keimo, sawana	charles, charles SD*, fighter, pastel, roccia, sawana pik, valencia	blazer, crisp, fame, silvertex, synergy, synergy SD*, entrusted fabrics	remix 2, remix 2 SD*, leather, client's own leather	Studio Design
	1	2	3	4	5
VV 922 BOX	3 861	4 169	4 602	6 553	7 281
VV 923 BOX	4 609	4 964	5 463	7 629	8 476

* Information on the possible use of fabrics from the Studio Design offer - table page 9

Base	CODE		EUR
Chromed skid with felt padding		●	
Powder painted (coloring according to Bejot's pattern book)		○	
Table VV 922 BOX			
Table top melamine + powder painted construction (coloring according to Bejot's pattern book)	TB2	○	+253
Table top melamine + (leg) chromed construction	TBC2	○	+269
table VV 923 BOX			
Table top melamine + powder painted construction (coloring according to Bejot's pattern book)	TB3	○	+267
Table top melamine + (leg) chromed construction	TBC3	○	+282
Additional equipment			
Mediaport (white-W or black-B): 1 voltage socket 230V (type E-Poland/ France or type F-Germany, or type G-Great Britain) + 2 x USB chargers	[type]2VCC	○	+251
Mediaport(white-W or black-B): 2 voltage sockets 230V (type E-Poland/ France or type F-Germany, or type G-Great Britain)	[type]2VV	○	+140
Reinforcement panel (placed under the upholstery) allowing to mount the bracket to a 32-inch TV set	TV	○	+50
Possibility to perform in a variety of colours within one type of the fabric (as in the pictures above)		○	