

RIO

Looking for more details?

SCAN
the QR code to view
technical specifications



In our facilities
Metal structure and
melamine components



glass desk
tops



For a sleek open management style

Fixed or structural returns with Altuglas® sliding doors and metallic legs in a matching finish

Melamine worktop 25 mm thick in 4 choices of finish or 8mm thick **enamelled toughened safety glass worktop** in 2 choices of finish

Melamine worktops come pre-drilled with openings to receive optional cable ports or direct desktop connectivity ports

Fixed height desks
height 73.5 cm

Bridge shaped metallic legs
in 2 choices of finish

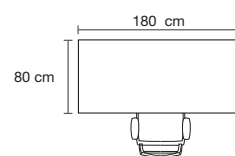




Rectangular desk W. 180 cm. Glass worktop in a mouse grey finish. Optional modesty panel.
Totem desk lamp (see p. 63). Trek executive office chair (see p. 180).



RIO creative



Configuration

Rectangular desk W. 180 cm D. 80 cm.
Glass worktop

3 665 319 GU SO € 751

Optional metal modesty panel

3 665 104 SO € 89



Rectangular desk W. 180 cm with structural return. Mineral blue colour finish.

98 Melamine storage units with sliding doors (see p. 72). Coach leather armchair (see p. 182).

RIO pricing

4 choices of melamine worktop finish (+ top 1)



RI
Light oak

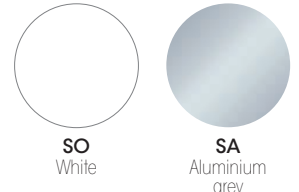
RL
Amber walnut

MT
Royal brown oak

MP*
Mineral blue

* MP excluding pedestals

2 choices of metallised finish for legs (+ leg)



SO
White

SA
Aluminium grey

2 choices of colour for glass worktops (+ top 2)



GS
White

GU
Mouse grey

2 choices of Altuglas® door colour (+ col.)

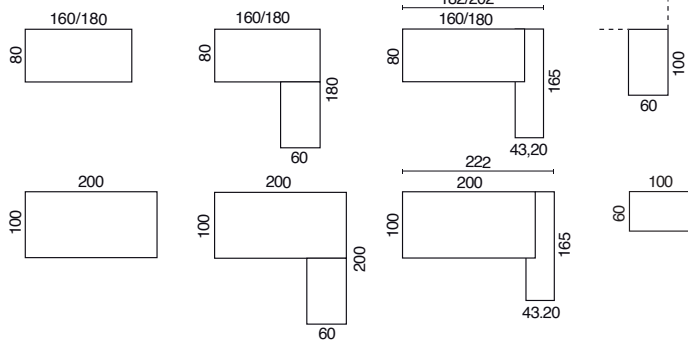


OA
White

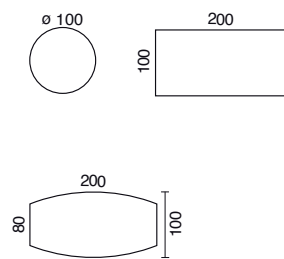
OB
Smoked grey

8 types of worktop design

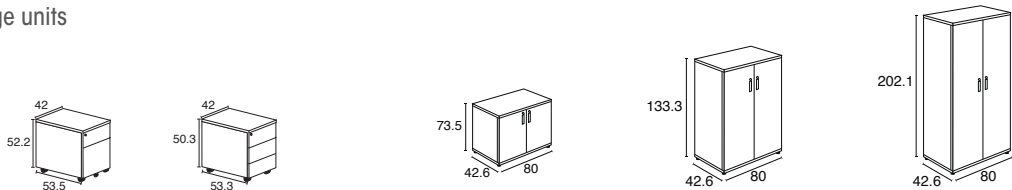
Work space



Meeting space



Storage units



FIT-OUT PACK



The complete office fit-out package at a preferential price

Contents

- + 1 desk 160 x 80 cm with glass worktop
- + 1 fixed return 100 x 60 with glass worktop
- + 1 mobile metal pedestal with metal top & 3 drawers
- + 1 cupboard H 133 cm with glass doors, melamine shell
- + 1 cupboare H 202.1 cm with glass doors, aluminium grey finish matching the legs

3 665 338 + top 2 + leg

€ 1754

99

WORK SPACES

RECTANGULAR DESKS



W. 160 x D. 80 cm
W. 180 x D. 80 cm
W. 200 x D. 100 cm

Melamine worktops

3 665 315 + top 1 + leg
3 665 316 + top 1 + leg
3 665 317 + top 1 + leg

562

604

656

Glass worktops

3 665 318 + top 2 + leg
3 665 319 + top 2 + leg
3 665 320 + top 2 + leg

646

751

877

RECTANGULAR DESKS ON STRUCTURAL RETURN WITH TWO-SIDED ACCESS

Melamine structural return in MG or MU finish, matching the legs - Altuglas® OA/OB doors (+ col.). Can be placed on the left or right side of rectangular desks.



W. 182 x D. 165 cm
W. 202 x D. 165 cm
W. 222 x D. 165 cm

Melamine worktops

3 665 321 + top 1 + leg + col.
3 665 322 + top 1 + leg + col.
3 665 323 + top 1 + leg + col.

1208

1250

1302

Glass worktops

3 665 324 + top 2 + leg + col.
3 665 325 + top 2 + leg + col.
3 665 326 + top 2 + leg + col.

1292

1397

1523

RECTANGULAR DESKS ON FIXED RETURN

The fixed desk return sits to the left or right side of rectangular desks.



W. 160 x D. 180 cm
W. 180 x D. 180 cm
W. 200 x D. 200 cm

Melamine worktops

3 665 327 + top 1 + leg
3 665 328 + top 1 + leg
3 665 329 + top 1 + leg

861

903

956

Glass worktops

3 665 330 + top 2 + leg
3 665 331 + top 2 + leg
3 665 332 + top 2 + leg

1045

1150

1276

FIXED RETURNS

The fixed desk return sits to the left or right side of rectangular desks.



W. 100 x D. 60 cm

Melamine worktop

3 665 333 + top 1 + leg

299

Glass worktop

3 665 334 + top 2 + leg

399

FREE-STANDING RETURNS



W. 100 x D. 60 cm

Melamine worktop

3 665 335 + top 1 + leg

415

Glass worktop

3 665 336 + top 2 + leg

541

OPTIONAL METAL MODESTY PANELS

Modesty panel attaches to the underside of melamine worktops by means of metal inserts or is secured to a crossbeam spanning the legs of glass top desks.



W. 160 cm
W. 180 cm
W. 200 cm

For melamine or glass worktops
Rectangular desks, free-standing or on fixed return

3 665 103 + leg
3 665 104 + leg
3 665 105 + leg

84

89

95

W. 182 cm

W. 202 cm

W. 222 cm

For melamine or glass worktops
Desks on structural return

3 665 337 + leg
3 665 103 + leg
3 665 104 + leg

79

84

89

WORK & MEETING SPACES

Choice of melamine worktop
finish (+ top 1)

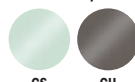
RI

RL

MT

MP*

* MP excluding pedestals

Choice of glass worktop
finish (+ top 2)

GS

GU

Choice of finish for legs
(+ leg)

SO

SA

Choice of colours for
Altuglas® doors (+ col.)

OA

OB

100

€ XXX From stock

€ XXX *On request

EASY-REACH STORAGE

**Mobile metal pedestals with metal tops**

W.42 x D.53.3 x H.50.3 cm

2 drawers

3 665 268 + leg

299**3 drawers**

3 665 269 + leg

299**Mobile metal pedestals with melamine tops**

W.42 x D.53.5 x H.52.2 cm

3 665 270 + leg + top 1

357

3 665 271 + leg + top 1

357**Mobile melamine pedestals with aluminium grey handles**

W.43.6 x D.56 x H. 60 cm

3 442 113 + top 1 + SB

255

3 442 114 + top 1 + SB

255**Fabric cushion pad**

Xtreme CS Cat. B M1 fire resistant fabric

**For metal pedestals
Attached with magnetic strips**

2 276 201 + fab. B

100**For melamine pedestals
Attached with velcro pads**

2 301 044 + fab. B

90

MEETING SPACES

**Circular table**

Ø 100 cm

Melamine worktops

3 665 211 + top 1 + leg

509**Glass worktops**

3 665 206 + top 2 + leg

830**Rectangular table**

W.200 x D.100 cm

3 665 317 + top 1 + leg

656

3 665 320 + top 2 + leg

877**Barrel shaped tables**

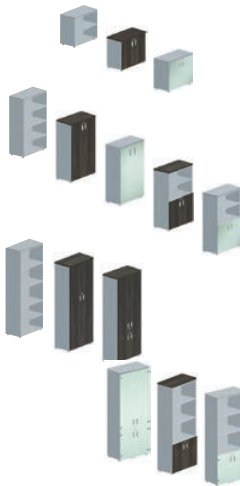
W.200 x D.100 cm

3 665 226 + top 1 + leg

898

TRADITIONAL STORAGE SOLUTIONS

Melamine cupboard shells available in a white MG or aluminium grey MU finish (+ fin.). Melamine doors (+ top 1), enamelled toughened safety glass doors in white GS or mouse grey GU finish (+ top 2). Matching melamine doors and tops for melamine shell cupboards. Melamine tops in a matching finish to cupboard shells or worktops for open or glass door cupboards. (+ top 3). See description p. 70.

**Melamine doors****Glass doors****Low cupboards - 1 shelf H. 73.5 x W. 80 cm x D. 43.2 cm**

Without door (open)

3 683 001 + fin. + top 3

163

2 doors

3 683 002 + top 3 + fin.

272

3 683 010 + top 2 + fin. + top 3

410**Medium cupboards - 3 shelves H. 133.3 x W. 80 cm x D. 43.2 cm**

Without door (open)

3 683 003 + fin. + top 3

282

2 doors

3 683 004 + top 3 + fin.

419

3 683 011 + top 2 + fin. + top 3

572

1/2 doors - 1/2 bookcase

3 683 005 + top 3 + fin.

389

3 683 012 + top 2 + fin. + top 3

536**High cupboards - 4 shelves H. 202.1 x W. 80 cm x D. 43.2 cm**

Without door (open)

3 683 006 + fin. + top 3

326

2 doors

3 683 007 + top 3 + fin.

520

4 doors

3 683 008 + top 3 + fin.

620

3 683 013 + top 2 + fin. + top 3

919

1/3 doors - 2/3 bookcase

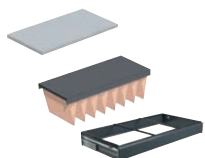
3 683 009 + top 3 + fin.

425

3 683 014 + top 2 + fin. + top 3

562

OPTIONS FOR CUPBOARDS

**Additional melamine shelf 19 mm thick in a matching finish to cupboard shell**

For cupboard W.80 cm

3 683 015 + fin.

35**Metal shelf for suspension files in a graphite grey finish**

For cupboards W. 80 cm

3 665 140 SC

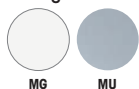
33**Metallic telescopic filing cradle in a black finish**

For cupboard W. 80 cm

3 665 141 SG

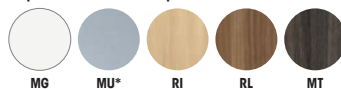
173

TRADITIONAL STORAGE SOLUTIONS

Choice of finish for traditional storage units (+ fin.)

MG

MU

Choice of melamine finish for cupboard tops and doors (+ top 3)

MG

MU*

RI

RL

MT

* MU not available for doors

Choice of glass door finish (+ top 2)

GS

GU

Choice of Xtreme CS M1 fire-resistant fabrics (+ fab. B)

V8

U1

U2

U6

€ XXX From stock € XXX *On request